

# The Grand Hyatt MetroBank Financial Center

Taguig, Philippines

# The new business and social hub of Manila

## A BMU challenge for limited spaces.

Client: Federal Land, Inc

The Grand Hyatt Metrobank Center is a 66-storey and 318m high skyscraper, located in Bonifacio Global City, Taguig City, Metro Manila. The first 25 floors of the skyscraper will be occupied by the Grand Hyatt Hotel (500 to 600 rooms), while the rest, by residential and commercial units.

Opening in the second quarter of 2017, Grand Hyatt Manila aspires to become the metropolis's leading icon of dining, lifestyle and entertainment in the capital city of The Philippines. Located in the heart of Manila's most vibrant commercial and entertainment centre, it will be the tallest building in the Philippines.

### Scope

The roof deck design made the installation of a building maintenance system a challenge: It was composed by four divided areas, each of them facing one of the facades, with a minimum space for a BMU to pass. It also incorporated a high parapet.

Also, it was not acceptable for the client to install a rail track on the roof deck, as it was destined to be a balcony for visitors. The facades included various "gaps" to the inside which still made the building maintenance more complicated.



The Grand Hyatt Manila located at Taguig City, aspires to become the metropolis's leading icon of dining, lifestyle and entertainment in the capital city of The Philippines.

**Strategy**

As the space available for the machine width was minimum, and a high parapet needed to be overcome, a machine with a small wheel-span and a telescopic mast had to be designed. Also, the counterweight was specially designed to fit in the small available space.

As a normal rail track could not be installed, we designed a foldable guide rail system which allowed the concealment of it when not in use, so the machine wheel system is composed of front wheels guided through the guide rail and the free rear rubber wheels.

A pantograph is incorporated to access to the inner facades.

In order to use the same machine in the four separated roof deck areas, four steel platform were built joining each of the areas and creating a closed traversing loop for the machine.

Regarding the upper roof deck, which is metallic and inclined, a Securail system from Fallprotec has been installed so that every area is accessible by roof technicians, for for the crown cleaning.



Length reduced counterweight.

**BMU Type FBA S**

A machine with a telescopic mast 6,5m high, a single jib with an elbow, with a 2m cradle with a 2,5m reach pantograph

**Steel platforms**

4 units with curves fixed permanently to the building structure

**Foldable guide rail system**

Approximately 150m

**Ladder type Securail**

20m for the spire antenna

**Rail lifeline type Securail**

300m for the crown cleaning

**Cable lifeline type SecurRope**

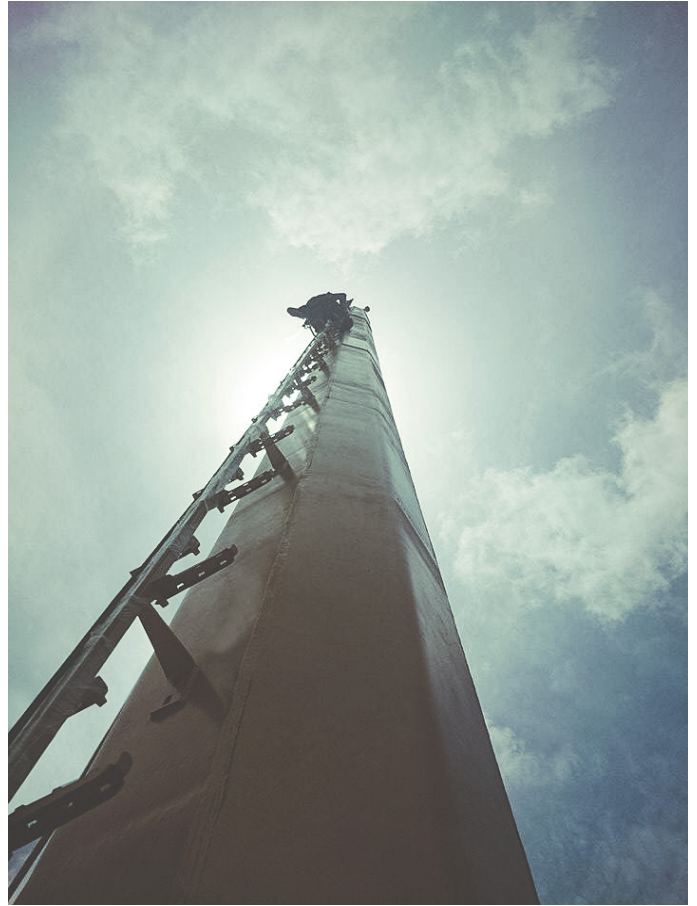
200m for the corner platforms of the BMU due to absence of guide rails



Foldable guide rail system.



Pantograph system to reach the concealed facade.



SecuRail ladder for the spire antenna maintenance.