

Discovery Primea

Makati, Philippines

Makati's yellow tower

Pantograph solution for facade's concealed areas.

Architecture: Tange Associates

Discovery Primea is a member of the prestigious Preferred Hotels & Resorts LVX Collection, a selection of refined and globally sophisticated hotels and resorts. Situated along Ayala Avenue in the Makati Central Business District, the 68-storey residential tower is one of the tallest buildings in the Philippines. Primea is part-hotel and part-residence.

The building was designed by the Japanese master architect Kenzo Tange in partnership with Filipino architect Jorge Ramos.

Scope

The particular maintenance requirement of the building was lead on one side by its height of more than 250m, the protruding balconies and other recessed areas.

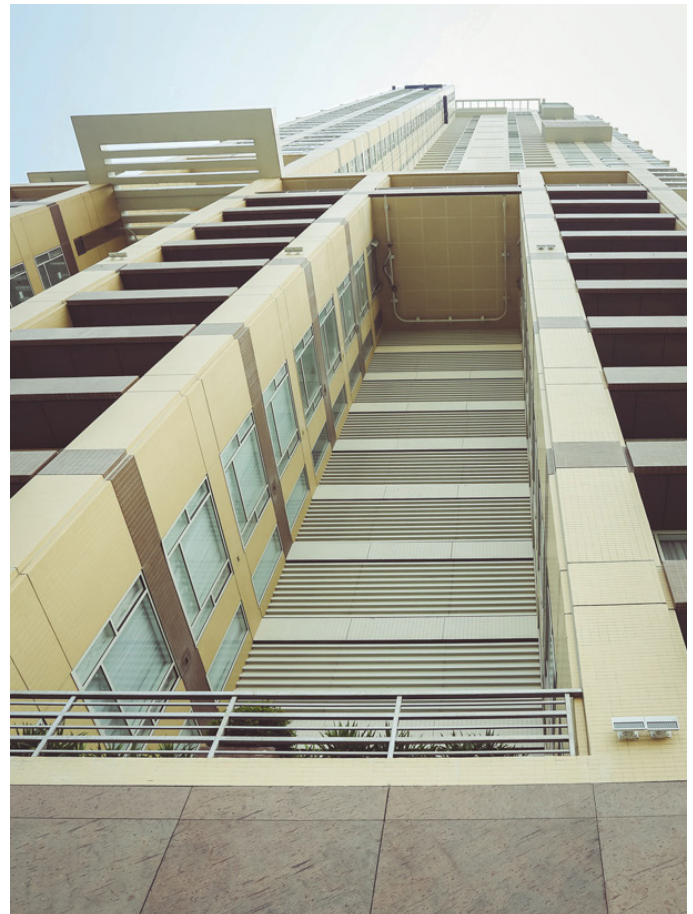
Strategy

FBA has designed, produced and delivered a BMU with pantograph in the cradle to reach internal areas of the facade. SafeAccess monorail for suspension of cradles has been installed for the most internal areas.

BMU Type FBA 1

A machine with a mast 12m high, a single jib and 3,6m aluminium pantograph cradle

FBA PC Powered cradles sets
For SafeAccess monorail



SafeAccess monorail installed in concealed areas for cradle suspension.

Safe access equipment type SafeAccess
Approximately 50m of monorail

Complete double rail track
With access to garage area for the BMU



4 meter mast to overpass the parapet.



Cradle with pantograph.